
Davies Lane Primary School

Gateway scheme

Improvement works to carriageway and footway areas at the entrance to the Davies Lane School plus rear vehicular entrance at Mornington Road.

Benefits

1. Promoting active travel and improving accessibility for pupils, teachers and parents
2. Tackling air pollution and increasing biodiversity by drawing the natural qualities of Wanstead Flats into the streetscape and enhancing links to local landscapes
3. Improving connections and access between the schools buildings.
4. Promoting local stewardship of green infrastructure.





High Road Leytonstone

Lister Road

Mornington Road

DAVIES LANE PRIMARY SCHOOL

Pastures Centre

Pastures gardens

The Good Shepherd Building

Davies Lane

WANTSTEAD FLATS

Agnes Cotton Court

Ferndale Road

Ferndale Rd. Gateway (BLEN)

Evelyn Avenue



Issues & Opportunities

Issues

1. Corridor effect along route, poor connection between school buildings and lack of visual connection
2. Excessive street furniture: guard rails, bollards, cycle parking
3. Vehicle access to Agnes Cotton Court
4. Conflict between vehicle manoeuvring and pedestrians at infants school entrance
5. Narrow footways and narrow gateways to the school grounds
6. Hard, grey reflective surfaces
7. General lack of greening in the 'school street' and along the south side of Davies Lane.

Opportunities/ Challenges

- Address carriageway alignment - prioritising space for pedestrians and cyclists
- Create a space that feels part of the school environment.
- Introduce softer, greener, permeable surface materials
- Tackle parking and vehicle manoeuvring
- New greening: street trees shrubs, raingardens
- New wayfinding
- Opportunities for seating and informal play
- Improve cycle parking facilities
- Address street clutter



Movement studies: vehicles

Key:

- Principle vehicle access
- ↔ Other vehicle routes
- ↔ Other vehicle access
- ▭ Parking bays
- ▭ Controlled vehicular access
- 1 School parking
- 2 Parking to housing



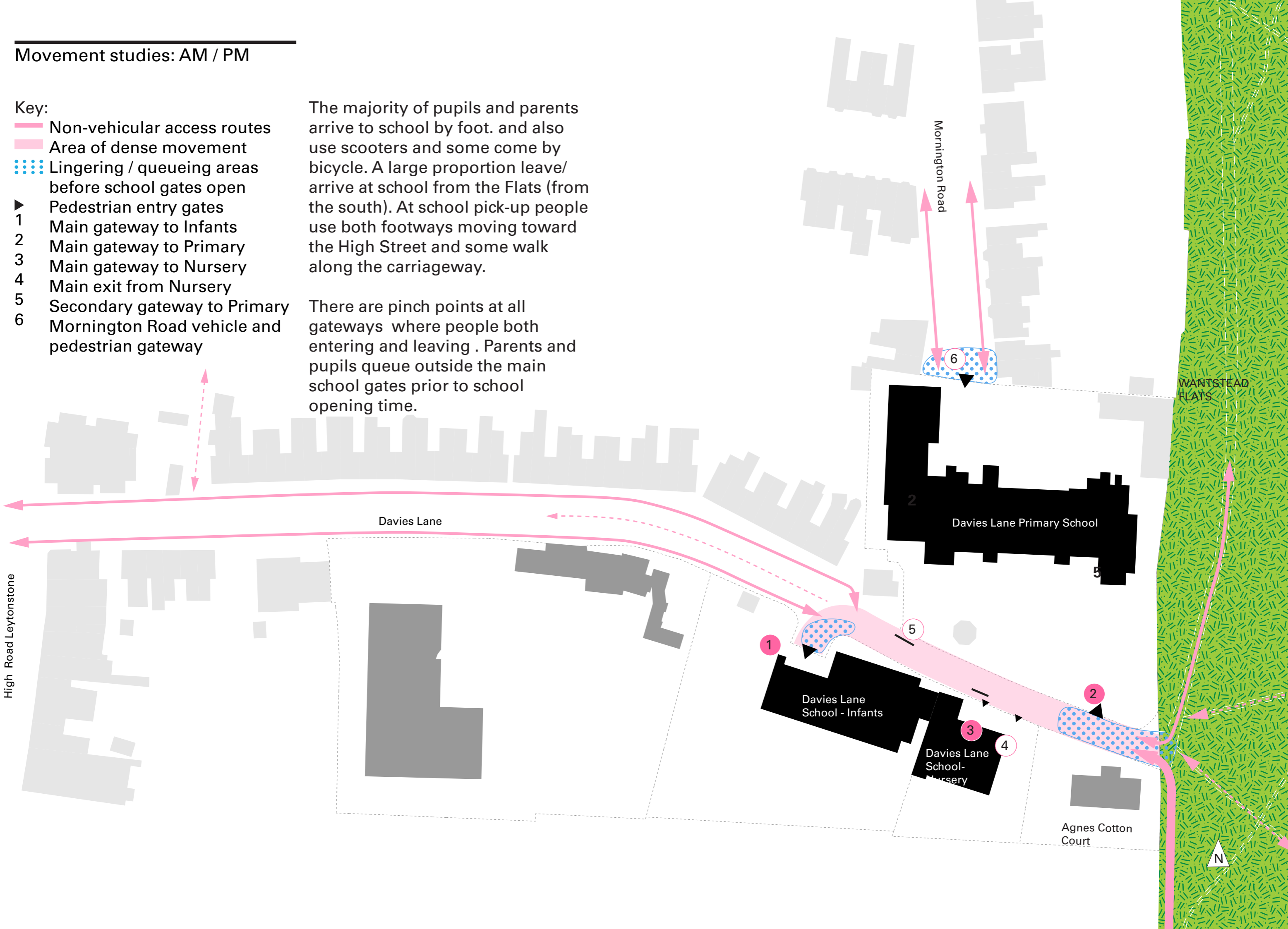
Movement studies: AM / PM

Key:

- Non-vehicular access routes
- Area of dense movement
- Lingerin / queueing areas before school gates open
- ▶ Pedestrian entry gates
- 1 Main gateway to Infants
- 2 Main gateway to Primary
- 3 Main gateway to Nursery
- 4 Main exit from Nursery
- 5 Secondary gateway to Primary
- 6 Mornington Road vehicle and pedestrian gateway

The majority of pupils and parents arrive to school by foot. and also use scooters and some come by bicycle. A large proportion leave/ arrive at school from the Flats (from the south). At school pick-up people use both footways moving toward the High Street and some walk along the carriageway.

There are pinch points at all gateways where people both entering and leaving . Parents and pupils queue outside the main school gates prior to school opening time.



High Road Leytonstone

Davies Lane

Mornington Road

WANTSTEAD FLATS

Davies Lane Primary School

Davies Lane School - Infants

Davies Lane School - Nursery

Agnes Cotton Court

N

Local green space and street

Davies Lane opens out to the rich and varied landscapes of Wanstead Flats and Epping Forest. These local eco-systems provide an important habitat for wildlife and a place for recreation.

Davies Lane provides a green connection to these open spaces by foot and by bicycle.



Wanstead Flats



Residents front gardens



Pastures gardens



Wanstead Flats - link to Davies Lane



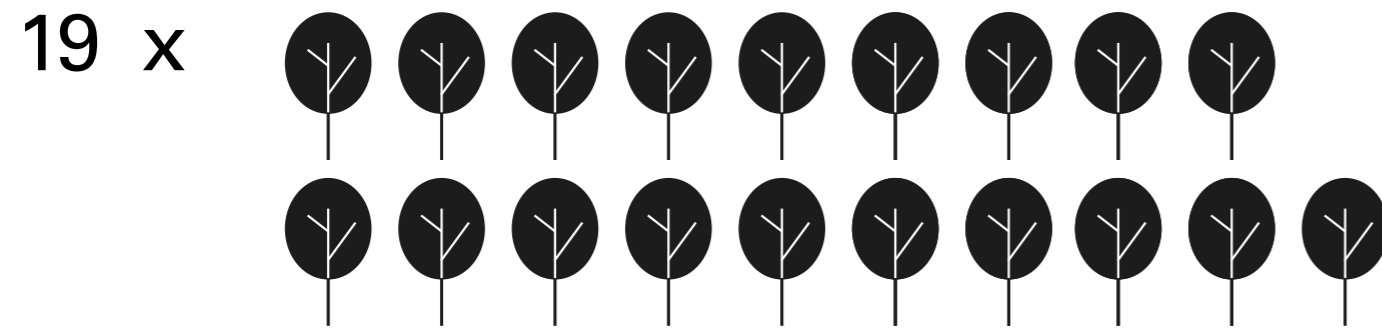
Davies Lane street trees

Street resilience

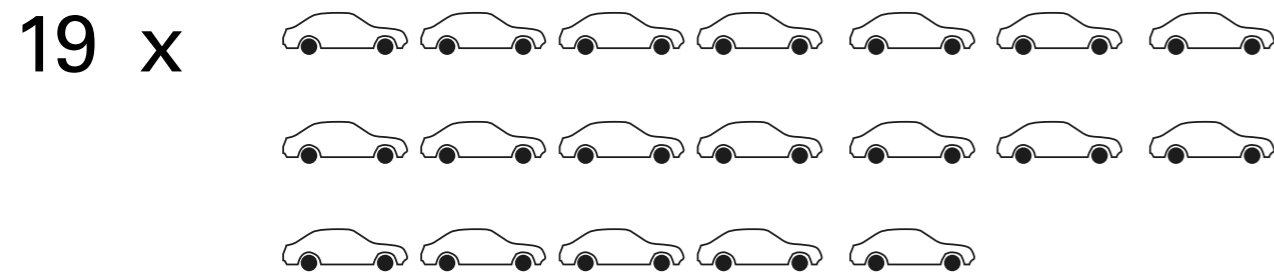
Local street trees

Davies lane has a total of 19 street trees and six different species of tree. The total combined carbon storage of the trees = 54,827kg.

Species type	No.	insect habitats	UTAQ rating	Carbon storage	Total carbon stored
Alder	4	141	High	2762kg	11,048kg
Birch	7	334	High	3224kg	22,568kg
Plane	1	-	-	7423kg	7423kg
Pear	1	-	-	286kg	286kg
Wild Cherry	1	-	Med.	3214kg	3214kg
Field Maple	4	51	High	2572kg	10,288kg



Total lifespan carbon stored
= 55,000kg



Total average usage* over 2 years
= 55,000 kg CO₂ emissions**

* 1 car travels on average 7,100 miles/yr, DfT MOT test data, 2021

** 1 car with 1 passenger = 171kg per km, BEIS/Defra greenhouse gas conversion factors 2019

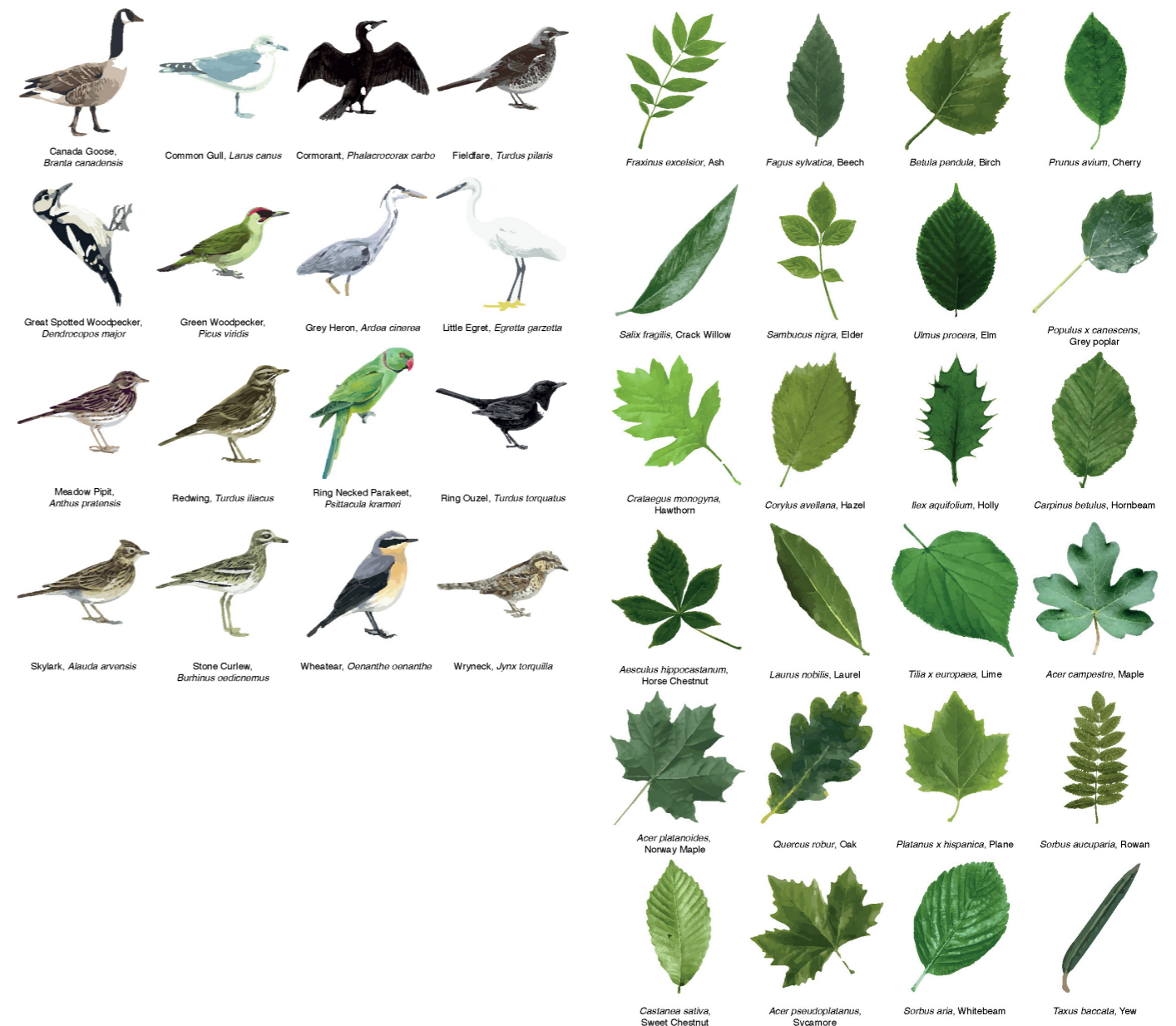
Local biodiversity

Wanstead Flats

With a combination of open grassland, ponds and woodland, many species of bird are common to Wanstead Flats and the wider Wanstead Park. In particular, the open rough grassland of the Flats provides a good breeding ground for Skylarks.

Bush Wood

Bush Wood is an ancient woodland dominated by oak and hornbeam along with hawthorn and holly thickets. Together these four species provide the overall character of the relatively small woodland, however some of the largest and oldest trees in the woodland are sweet chestnuts.



Concept / let nature flood in

Bring the natural qualities of Epping Forest along Davies Lane and all the way up to High Road Leytonstone.

High Road Leytonstone

Mornington Road

Davies Lane

Davies Lane Primary School

WANTSTEAD FLATS

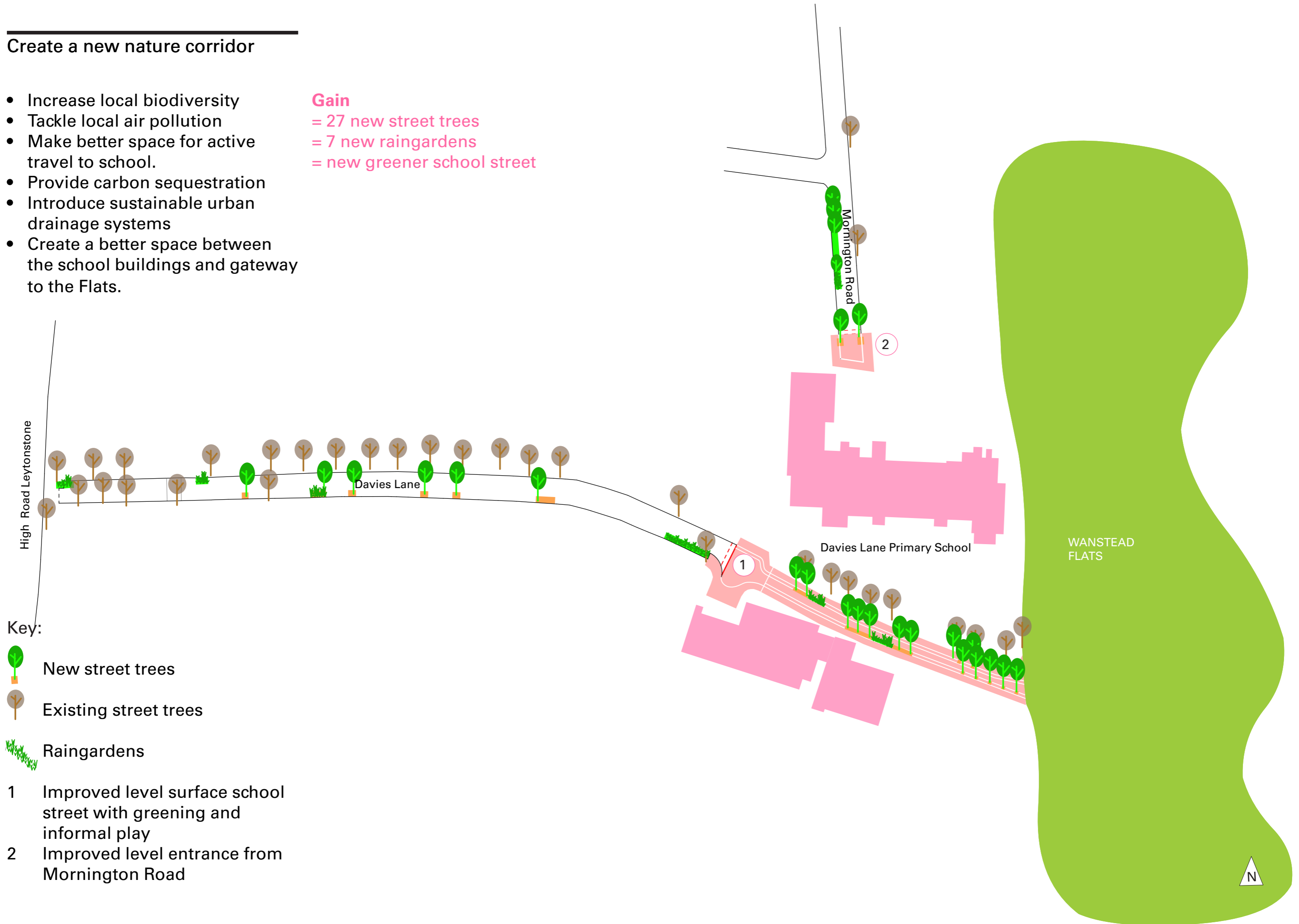
N



Create a new nature corridor

- Increase local biodiversity
- Tackle local air pollution
- Make better space for active travel to school.
- Provide carbon sequestration
- Introduce sustainable urban drainage systems
- Create a better space between the school buildings and gateway to the Flats.

Gain
= 27 new street trees
= 7 new raingardens
= new greener school street



Concept design / street layout



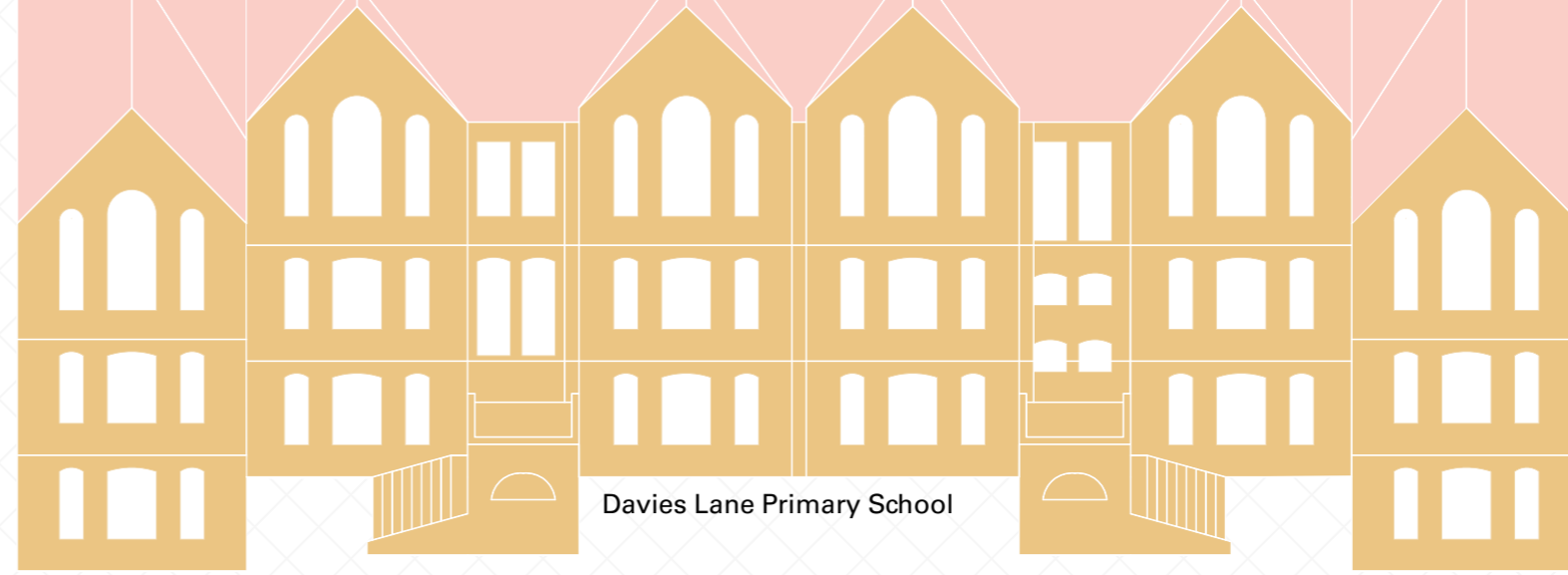
- Key:
- Potential carriageway build-outs:
 - New street trees
 - New raingardens
 - New raised level carriageway table
 - Re-surfaced and new layout

- Reduction
- 6 parking bays at Davies Lane
 - 6 parking bays at Mornington Road



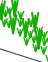


Concept design / school layout

A space that feels part of the school environment, provides new green corridors and better space to walk, cycle, spend time, play, events or outdoor classes.



Key:

-  New street trees
-  Existing street trees
-  Raingardens


- A** New raised level table with new permeable finishes.
- 1** Planting strips: trees and raingardens
- 2** New widened entrance gateways
- 3** Gateway to the Flats
- 4** Water fountain seating area
- 5** Vehicle zone

Concept design / Mornington Road

A space that feels part of the school environment, provides more generous and spacious entrance and a green gateway into the school.

Key:

 New street trees

 Existing street trees

 Raingardens

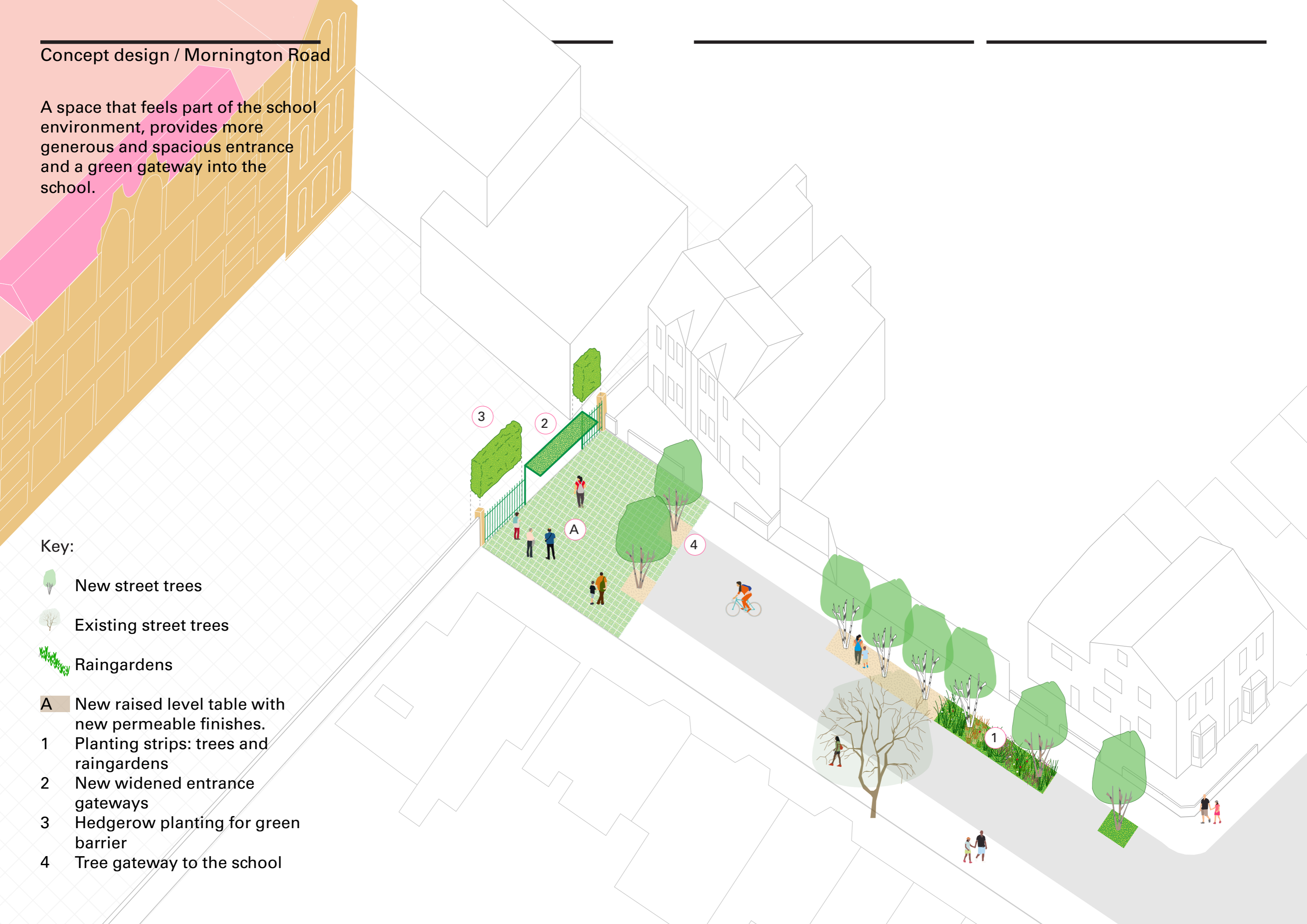
A New raised level table with new permeable finishes.

1 Planting strips: trees and raingardens

2 New widened entrance gateways

3 Hedgerow planting for green barrier

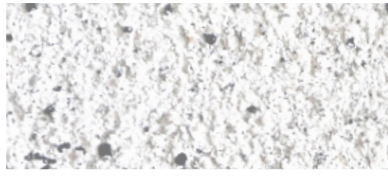
4 Tree gateway to the school



Ideas for surface materials

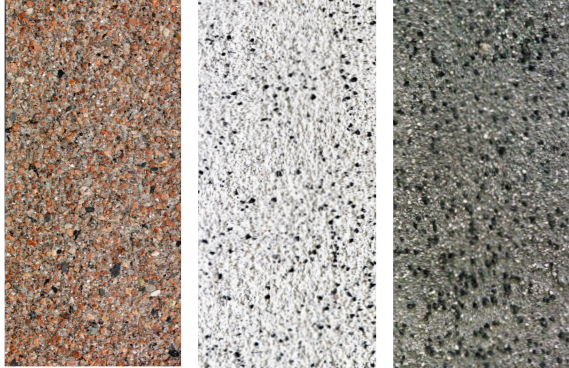
Kerbs and channels

Granite: *Silver / Grey fine picked*



Carriageway finishes:

Charcon ECO-range:



Pink Granite Silver Fleck Graphite Grey Fleck

Ecogrid / grass or gravel fill



CEDEC self-binding loose gravel / *silver, bronze, gold*



Ideas for street furniture

Inspired by the range of existing 'heritage' street features

